



OBT Established 1903

PureLand Path

The Oregon Buddhist Temple Monthly Newsletter

August 2015

Minister's Corner Rev. Dennis Fujimoto



OBON in Portland

Each summer we hold our Obon Cemetery visits, Obon/Hatsubon Service, and the Obonfest here in Portland. The Obon festivities are held at all the BCA temples throughout the nation. Most are held from

the end of June through July and August ... a parade of dancers, music, dragonflies and lanterns illuminating the landscape. Generations here bow to generations past. We thank them for our opportunity at life that they have left for us to explore and savor. The Nembutsu allows us to touch and thank them all.

The services at the cemeteries and at the temple allow us to turn to the heart of the matter. We are able to focus on the meaning of the Obon season beyond favorite foods, happy dancing, and snow cones. We visit cemeteries of our area, meeting families along the way. The chanting voices resonate in perpetuity and connect us to generations beyond what the memory can hold.

The Obon Service at the temple is intended for each of us in general to reflect upon those we have lost during our lifetime. The Hatsubon is more specific, as we consider the delicate first year of a loss. It is our tradition to honor the temple members we have lost during the time from last year's Obon Service to this year's Obon Service. The families of the deceased are formally invited to attend this Hatsubon Service. A paper lantern is created with the name of each of the deceased. The lanterns are lit during the service as a gesture of honor and appreciation. As we elevate those we have lost, we elevate ourselves in shared dignity, respect, and humility. As we honor them, we honor our own lives and remind ourselves to persevere and to make the most of our time.

The wonderful story from the Buddha, where the mother of a dead child is told to get mustard seeds from some house where death has never entered is a poignant way to remind us that we are each touched by death. This is the commonality of our human condition. The festivities and the services are not for the deceased, but for us. We are the ones who struggle to find meaning and direction, and we help each other along this path. What a beautiful way to live.

During our Shin Buddhist funerals, we read the letter "On the White Ashes" from the Gobunsho Letters of Rennyō Shōnin. From this letter, we hear the words, "**Those who leave before us are as countless and as fragile as the drops of dew. Though in the morning we may have radiant health, in the evening we may be white ashes.**" The words ring clearer when the loss is closer to us. We each face the eventuality that those words are for me.

The depth of moment comes as life is lived as a treasure. The focus on now and the appreciation of each moment becomes possible only when death is placed in the equation. Through words of Dharma, reflections of truth, and experience of loss, we prepare for our own death. Where do we go to prepare for the lessons of life and death? We come to the temple. Schools don't touch it. It is at the temple that we find guidance to maneuver through the maze of life and death. Along the way, we find people stuck on who said what and who did what while missing the point of the temple entirely. Gently, we keep each other on track.

There is beauty and graceful dignity in providing assistance to those facing their journey through life and death, and then to receive this same assistance when our turn comes. There is no other place that is more deserving of our effort, time, or money than the temple. This is what moves me. Cemetery visits are July 18. The Obon/Hatsubon Service will be July 19 this year, 10:00AM. Obonfest is August 1. We will see you at the temple.

Rev D

"The purpose of the Oregon Buddhist Temple is to insure that the Jodo Shinshu Sangha have the facilities, resident minister and other resources they need to share the Buddha Dharma in their daily lives and during their major life events."

Oregon Buddhist Temple 3720 SE 34th Avenue Portland, OR 97202-3037 503-234-9456
503-231-1551 (fax) e-mail: oregonbuddhisttemple@yahoo.com website: <http://www.oregonbuddhisttemple.com>

This monthly newsletter is published by the Oregon Buddhist Temple, a Buddhist Churches of America temple affiliated with Jodo Shinshu Hongwanji-Ha. Please contact the temple with any comments, questions or concerns, or if you wish to report a change of address. Send news items to the editor: Amy Peterson at: newsletter@oregonbuddhisttemple.com

President's message

Cathy Yarne, OBT President



Hello Sangha Members,

This month I thought I'd share my thoughts about how I think OBT is doing and a few things I've learned about the OBT during my six months as President.

as our objective, overall, I feel we are doing more than "just surviving".

Although we haven't had a resident minister for 6 months, with guidance and assistance from our supervising minister, Rev. Fujimoto, our Minister Assistants, Buddhist Education Committee and Dharma School teachers, OBT has been successful in sharing and teaching the Buddha-Dharma. Rev. Fujimoto has been not only a resource for our temple but also everyone looks forward to his dharma talks. Even though the dharma school attendance is sporadic and sparse, our teachers have not given up. They continue to provide dharma lessons every week.

Our temple building is almost 50 years old so there are always things in need of repair or replacement. Fortunately, thanks to the leadership and dedication of Ray Fukunaga, the temple is in reasonably good shape. Many people have lent their "expertise" and helping hands to ensure our temple is maintained and working well. This includes yard work. The garden toban has put in some long, hot hours keeping everything trim and neat.

To state the obvious, we rely on our Sangha's generous donations, membership and most significantly, volunteer efforts. Maintaining and operating our temple is not cheap. (Fact: utilities for the last 2 years have exceeded \$14,000 a year) Also, it's true that without a resident minister the ministerial expenses for the past six months are less. However, a supervising minister is not without expenses: monthly travel, lodging, minister's orei and donation to Idaho-Oregon Temple.

The most significant thing I've learned as President is that OBT is sustained by volunteers who believe in learning and sharing the Buddha - Dharma.

As I stated in last months newsletter, Obon is an event that demonstrates the spirit and commitment of our OBT Sangha. There are an incredible amount of volunteer hours that go into this event. I'd like to thank everyone in advance for volunteering at Obon.

In Gassho,
Cathy



Thermal Pitchers / hot pots: These are great for serving hot tea to small groups.

Person(s) to mow the lawn: We need a volunteer(s) who can cut the grass on a regular basis. We have the equipment.

Please contact Cathy Yarne if you are able to fulfill our "wishes."



OBONFEST August 1st Festival Schedule:

- 3:00pm Festival Opening
- 3:15pm Temple Talk (in temple)
- 3:30pm SUSSE FUSSE INTERNATIONAL
FOLK DANCE TROUPE
- 4:10pm JKF Ryobukan KARATE demonstration
- 5:00pm Classical and Folk Dances of Japan
by the Sahomi Tachibana Dancers
- 5:30pm Temple Talk (in temple)
- 6:00pm PORTLAND TAIKO
- 6:45pm Service for dancers (in temple 5-10 min)
- 7:00pm Dancer procession and BON ODORI
DANCES
- 2 hours with intermission
- 9:00pm Festival Closing

OBWA News by Etsu Osaki

WORLD BUDDHIST WOMEN'S CONVENTION

"Embraced by the Oneness of Life" was the theme of the 15th World Buddhist Women's Convention in Calgary, Canada May 30-31. Imagine over 2,000 delegates! The largest delegation was from Japan. Others came from Brazil, BCA, Hawaii and, of course, Canada. The event was held at the spacious convention center in Calgary.

Many dignitaries were present—among them the Gomonsu from Nishi Hongwanji in Kyoto, Japan. Others were Bishop Tatsuya Aoki of Canada, Bishop Iashito Kajiwara of Brazil, Rev. Kodo Umezu, bishop of BCA, and Bishop Eric Matsumoto of Hawaii. Talks were given in Japanese, English and Portuguese with spontaneous translations via earphones.

The first keynote speaker was **Rev. Nana Yanase** of Nara, Japan. She is also a singer and a songwriter and sang songs to highlight her talk. At age 30 she was diagnosed with uterine cancer and because of this she experienced "deep insight into life and death."

Through her music she was able to overcome this medical condition.

After the deadly earthquake and tsunami in Japan, she wrote the song "Makenai Towel". The 85,000 towels were created to raise funds. "Makenai" has two meanings; first, it means not to give up and secondly "can't tie." (It's too small to go around the head.)

Her eloquent melody and gentle, yet deeply heart-rending vocals and lyrics were received with much applause.

Rev. Patricia Kanaya Usuki, BCA minister of San Fernando Valley Buddhist Temple, was the other keynote speaker. A native of Toronto, Canada, she received much of her education in Canada, then at IBS in Berkeley and also in Japan. She is quite a linguist in French, Spanish, Portuguese, German, and Italian besides English and Japanese. She is the author of the book **Currents of Change: American Buddhist Women Speak Out on Jodoshinshu**.

Her emphasis was on interdependence. We don't exist by ourselves. We take so much for granted today, but just being at the conference was due to our karma. We have much to be grateful for in spite of all the worries in this world.

Think of the hardships our immigrants had, and yet they persevered thanks in large part to the Nembutsu. They were imprisoned during the war into camps.

Having lots of material things is not the answer. Ignorance and inequity are the causes for wars. There must be a Middle Path. We have the Nembutsu to help others and us. She concluded with "Be the best you can be--Create a World Sangha."

There were many workshops. They were based on the 8-fold Path. I attended one on Right Meditation conducted by my sister-in-law, Lorita Ichikawa. It was on the Nikan psychology—a method of self-reflection.

The second workshop I attended was on "Right

Mindfulness—Why Music" It was led by my nephew, Andrew Ichikawa.

A panel presentation by five excellent speakers was held on Sunday. The speakers were from BCA, Brazil, Honolulu, Calgary and Japan. All were excellent and interesting.

Thanks to the members in Canada for organizing such a wonderful convention. The next convention will be held in San Francisco, August 30-September 1, 2019. Plan on going!



OBWA wishes to thank all those that donated to their community outreach Backpack program that supplies food to families in the Tigard-Tualatin School District.

Japanese Cooking Class with Chef Obayashi



More than 20 participants "fine tuned" their cooking skills with Hiroji Obayashi. The intimate setting of the OBT kitchen made it easy to observe and ask questions as he prepared Ma-bo Nasu, clear soup and Hako-sushi. He shared many practical tips like: Making dashi from scratch isn't that difficult, especially if you make a large batch and freeze serving size portions for later use.

He demonstrated some basic techniques on how to roll sushi with the rice on the outside and nori on the inside. He encouraged everyone to be creative and experiment with using different ingredients like mango. Also using various types of molds and ordinary containers (as molds) he made it seem like even I (an amateur sushi maker) could create a fancy sushi platter. OBT will explore the possibility of more Japanese cooking classes in the future.

Dharma School News

dharmaschool@oregonbuddhisttemple.com

Join us in September when we kick off our 2015-2016 year at Kenilworth Park. Watch the newsletter for more details as it gets closer.

Childrens activities are ongoing during the summer, but no classes are held.

Girl Scout News

The temple Girl Scout troop is open to all girls regardless of religious affiliation. Meetings are the second and fourth Sundays from 12:15 to 1:15.



Scouts, Campfire, 4-H can earn the BCA Scouting Obon Patch by completing the requirements. Requirements and information will be available at Obon dance practices. Contact

dharmaschool@oregonbuddhisttemple.com

NEW DVD IN THE LIBRARY

ALOHA BUDDHA, The Unexpected Journey of Japanese Buddhism in Hawaii

"This is the story of how Japanese people came to Hawaii in the late 1800's and adjusted their culture and religion to fit in a foreign land. Brought over by immigrants who came to work on the sugar plantations, the pressure of politics, Americanization and Christianity reshaped Japanese Buddhism in surprising and unique ways. In Hawaii, Japanese Buddhists built Indian style temples, filled them with Christian church pews, and sang modified hymns that praised the Buddha. It was all done as part of the 'American Way.' **Aloha Buddha** is an epic journey that chronicles how one religion found a home in Hawaii."

(You can find more information about the film by visiting their website

<http://www.alohabuddhafilm.com/>. If after viewing you'd like to purchase a copy, remember to go through our OBT website and use the Amazon link as we get a small donation.

How to help the temple with little or no effort.

If you order items online, shop at Amazon, or shop your local grocery store, you might be able to donate to the temple and get a tax deduction.

Check the temple website for more information and links. <http://www.oregonbuddhisttemple.com/>

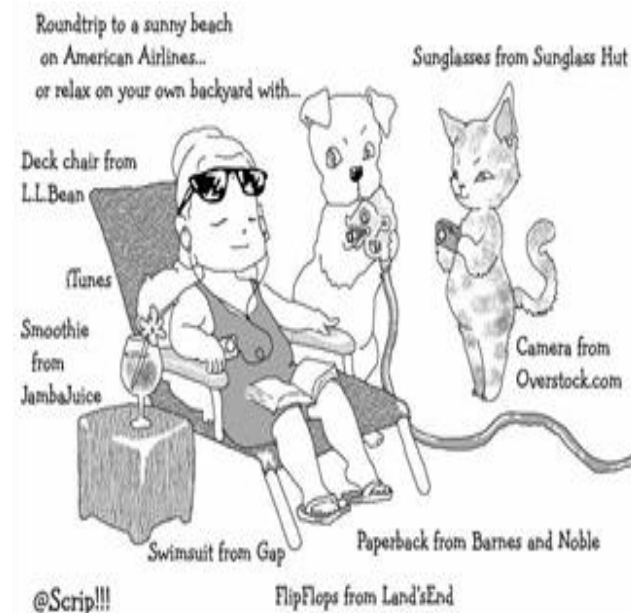
TOBAN Team 5 Aug 2015

Hittle, Judy	Hittle, Paul
Hokama, Pat	Hokama, Tom
Larouche, Chip	Larouche, Setsy
Okamoto, Janice	Ono, Tomoko
Ono, Yoshi	Shikatani, Cathy
Stoeller, Willem	Tanaka, Bill
Tanaka, Linda	Yanase, Craig
Yanase, Lisa	

There's no greater Dana than selfless giving. You can use monthly Temple clean up as a meditation itself. You don't have to be on this month's Toban to help make the Temple an inviting place. If you'd like to be placed on a Toban list, please contact us at board@oregonbuddhisttemple.com Temple clean up is usually the last Saturday of the month. Please check with the tobans on Sunday to confirm the date.

Toban not only means "my turn" but "my chance" to show my appreciation to all the men and women whose monetary donations and hard work resulted in this beautiful place, our Temple, to hear the Dharma

Words of Jean Matsumoto - 1995



OBT June Board Meeting Summary

By Angie Hughes



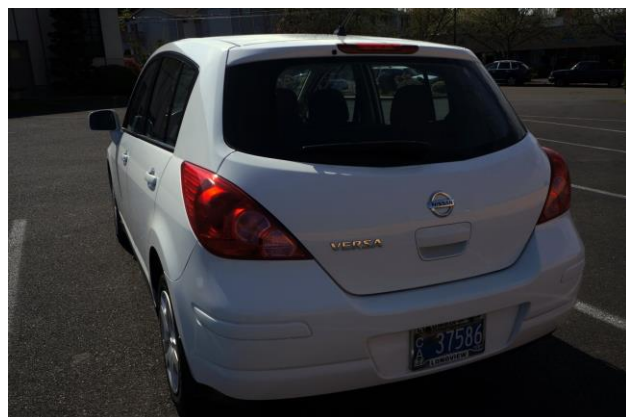
Due to unforeseen circumstances please look for the summary in next month's newsletter.

Cool Deal for a Hot Summer:

2012 White Nissan Versa for sale.

Low miles, excellent condition.

Contact Elaine at 360-513-0315 or at

e.yuzuriha@comcast.net
**OBT BOARD**
board@oregonbuddhisttemple.com

Term Ending 2017: Katie Tamiyasu, Judy Hittle, Phaedra Urban, and Cathy Yarne (President)

Term Ending 2016: Susan Endecott, Al Ono, Amy Peterson, Charles Reneau (Vice President)

Term Ending 2015: Marilyn Achterman, Angie Hughes (Recording Secretary), Craig Yanase, Ray Fukunaga (Maintenance)

OBT Financial Officer: Elaine Yuzuriha

LOTUS CIRCLE – Aug by Jean Matsumoto

A glorious summer is bringing us an abundance of brilliantly colored flowers which adorn our onaijin (altar) and elsewhere around our temple thanks to our Flower Toban members' arrangements every Sunday. OBT is

grateful for those who have joined the Lotus Circle which pays for the flowers that honor deceased loved ones. Again this year, the donation from Reiko Haupt for the altar flowers on the last Sunday in July in memory of (imo) her mother, Karen Scapple, was omitted. Please accept my apologies. This year, donations for the flowers in the month of August will honor:

- August 2 – Ami Kinoshita imo her parents, Taitaro and Mitsu Nakao, and her late husband's parents, Tokuji and Kise Kinoshita
- August 9 – Matt, Randy and Julie Muramatsu imo their mother, Phyllis Muramatsu, and her late parents, Sumiko and Frank Ando.
- August 16 – Sandie Yamauchi imo her parents, Ben Yukio and Misaye Tonooka, and her grandmother, Chiyoko Tonooka.
- August 23 – Ray Fields imo his step-father, Bernard Mayers
- August 31 – anonymous imo Tanezo Niiyama

If you wish to share photos, memories, thoughts, poems, etc. of your loved one, please do not hesitate to contact Ken Garner (webmaster@oregonbuddhisttemple.com). For Lotus Circle questions or information, please call 503-280-2463 or jamatsumoto@gmail.com.

OBT Readers' Club**Wednesday August 19, 2015 7:00 - 8:30 pm****A God in Ruins By Kate Atkinson**

A God in Ruins tells the dramatic story of the 20th Century through Teddy Todd--would-be poet, heroic pilot, husband, father, and grandfather--as he navigates the perils and progress of a rapidly changing world. After all that Teddy endures in battle, his greatest challenge is living in a future he never expected to have.

An ingenious and moving exploration of one ordinary man's path through extraordinary times, *A God In Ruins* proves once again that Kate Atkinson is one of the finest novelists of our age.

Join our discussion of this book (and other topics) at the next meeting of the OBT Readers' Club Wednesday August 19, 2015 from 7:00 pm - 8:30 pm. We meet at the Lucky Lab Brew Pub, located at 915 SE Hawthorne, Portland, OR. The OBT Readers' Club meets every other month on the 3rd Wednesday. Next meeting after this one will be October 21. All are welcome.

OBWA News by Katie Tamiyasu**July Calendar of Events**

July is a very busy month as the temple begins preparing for OBONFEST to be held on August 1st. Tuesday and Thursday Obon dance practices will begin on July 14th, under the leadership of Sahomi Tachibana. OBWA will help pay for some of the

refreshments during intermission, and donations are always welcome.



On Saturday July 18th, Yukata and Kimono sales led by Yasuko Fields, Misa Kodama and Naomi Masuoka will be held from 12:00pm to 3pm.

Also on this day, Somen otoki prep will begin at 1pm, led by Judy Yamauchi and Ann Shintani, and final preparation will start at 8am on July 19th, to be served for lunch after our Obon/Hatsubon Service with Reverend Fujimoto.

Hannah Honma will be in charge of manju preparation for Obon, date and time to be announced soon.

On Friday July 31st, Obonfest somen preparation will be led by Jayne Ichikawa and Cathy Yarne, and Spam musubi preparation will be led by Nancy Kajitsu and Katie Tamiyasu; start time 9am.

We appreciate all the members and friends that come together each year to help with food prep and set up of the Obon event.

August Calendar of Events

August 1st, Spam Musubi makers to start at 11am.

August 15th, 9:30am OBWA meeting. The AED/CPR class to be rescheduled.

August 16th, Kristi Fukunaga and June Shiigi will attend Rennyo Shonin Service at the Seattle Betsuin, followed by a potluck lunch to welcome two young ladies from the

Japan BWA Youth Exchange. Kristi was one of the two CA FBWA Youth Exchange students to Japan last year from the NW District.

August 17th to the 20th, OBWA and OBT will host the two youth exchange young ladies from Japan. Ray and Lori Fukunaga will be their host family while in Portland.

June and Stan Shiigi will drive the two visiting students back to Seattle on the 20th with a stop at the Tacoma Buddhist Temple for lunch.

Next month's reporter will be Etsu Osaki.

If you are interested in joining the Oregon Buddhist Women's Association, please contact Co-Presidents: June Shiigi (obwa@oregonbuddhisttemple.com) or Jayne Ichikawa (jayneichi@gmail.com).

OBT 2015 Holiday Craft Fair

"Always Local, Always Handcrafted"

Saturday, Nov.14, 2015 10:00 A.M. – 4:00 P.M.

Mark your calendars for the 3rd annual OBT Holiday Craft Fair on Saturday, November 14, 2015. This year's craft fair will offer a wide variety of quality, original handmade items created by talented, local artists and crafters. Start your holiday shopping or just treat yourself to something special. You can pre-order lunch or take home something for dinner. **Save the date and spread the word, "the OBT Craft Fair is an opportunity you won't want to miss".**

While some of our top selling vendors will be returning, we still have room for some new sellers who have handmade items or original artwork to sell.

To insure a space, vendors are encouraged to apply a.s.a.p. For an application & more information, see our website:

<http://www.oregonbuddhisttemple.com/events/2015/craftfair2015.html> or contact Carol or Ann at craftfair@oregonbuddhisttemple.com The application deadline is October 20, 2015.

Oregon Buddhist Temple June 2015 Donations

In memory of Phyllis Muramatsu
In memory of Patsy Abe
In memory of Dick Hoverson
Chris Dart

In memory of Ben Ishida
Ken & Katie Kawazoe
Carolyn J. Saiget
Miyeko Yagi

In memory of Seiichi Fujii
Roberta Ando

Shotsuki Hoyo
Anonymous
(In memory of Aster, John, Charlotte
Mishima)
Susan Endecott (In memory of Tomo
Sunamoto)

In memory of father's birthday
Jean Matsumoto

Lotus Circle
Mitsuko Hasuike
Shoun & Grace Ishikawa
Ruth Sono Watanabe

Special donations
Chris Dart (Obon)
Alice Sumida (Osonae)
Herb & Etsu Osaki
Thelma M. Ryusaki
Jennifer Hoang
Anonymous

Gotan-e
June & Stan Shiigi

Member pledge donations
Diane Ando Harder
Takako Maeda
Jean Matsumoto
Susan M. Lilly

Acknowledgements are mailed to individuals for donations of \$250 or more, to donors not on the OBT mailing list, and to any donor upon request. Please inform us of any significant errors or omissions.
Susan Endecott
e-mail: sjendecott@gmail.com

Thank You for Your Donations by Envelopes and PayPal

Envelope donations are greatly appreciated. PayPal donations can also be made by following a link to the OBT donate page at: <http://www.oregonbuddhisttemple.com/donate/paypal.html>
There are several links on this page, which goes directly to OBT's PayPal account and can be used by anybody to make a donation to OBT – they do not need to have a PayPal account. Follow simple instructions for donation designations.



*Oregon Buddhist Women's Association
Invites You to a
Welcome Potluck Dinner Party for the
2015 BCA FBWA Youth Exchange
Two Young Ladies from Japan
on Monday, August 17, 2015
at the Oregon Buddhist Temple.
Service: 5:00 pm
Potluck Dinner: 6:00 pm
Tea Will Be Provided*

*June Shiigi: juneshiigi@gmail.com, 503-642-2791 or
Jayne Ichikawa: jayneichi@gmail.com, 503-639-0067.
Kristi Fukunaga, last year's NW youth to Japan, will be present.*

Shotsuki Hoyo

This is a monthly memorial service to honor and remember those loved ones who passed away during the August 9th at 10 am during our regular Sunday Service.

In the past, families were notified by mail regarding a service for a deceased family member. However, with this plan, no letters will be sent. It will be one special service for all families who lost a loved one in the month of July. Please join us in honor of your relative(s).

Listed below are the names of those who passed away starting from 1930. Oregon Buddhist Temple has records from 1904. If a name is missing, incorrect, or prior to 1930, please notify Jean Matsumoto, Etsu Osaki, or the temple. Please note Sept. service to be determined.

Abe, Patsy 8/30/2006	Kataoka, Tsunekichi 8/15/1946	Smith, Vincent 8/19/2001
Akao, Toshiko 8/14/2000	Kawamura, Ko 8/8/1934	Sono, Karen 8/14/1948
Ando, Suematsu 8/20/1947	Kawashima, Yoozo 8/23/1943	Susaki, Nobuko 8/2/2001
Ando, Sumiko 8/25/2001	Kunimune, Sadaji 8/18/1931	Tajima, Shunsaku 8/19/1949
Azuma, Nisuke 8/11/1961	Maeda, Francis Kanji 8/24/2001	Takabayashi, Tsunetaro 8/20/1960
Fujii, Nenshi 8/9/1941	Mayers, Bernard Leon 8/17/2010	Takata, Ichiro 8/30/1945
Fujii, Shimon 8/3/1938	Muramatsu, Phyllis 8/11/2006	Tamiyasu, Shoji 8/18/1947
Goto, Sanji 8/8/1947	Naemura, Saisuke 8/20/1953	Tanada, Kenichi 8/22/1949
Greenwood, Arlita 8/10/2001	Naganuma, Sam Sadatoshi 8/12/2001	Tanada, Saichi 8/12/1957
Harada, Kintaro 8/23/1931	Nakao, Emil 8/14/2005	Uesugi, Shodo 8/10/1933
Harrison, Henrietta Ueoka 8/5/2014	Ohkawa, Toichi 8/11/1959	Uesugi, Take 8/9/1953
Hasegawa, Rihei 8/27/1933	Ozaki, Yoshimatsu 8/6/1933	Winner, Diane Renee 8/7/2001
Hashimoto, Toshinosuke 8/23/1938	Ryu, Wataru 8/17/1937	Yagi, Kan 8/9/2013
Hata, Kesae Kay 8/17/2000	Sadanaka, Tokichi 8/7/1933	Yamaguchi, George Ko 8/13/1945
Ishida Baby 8/12/1950	Sakagami, Kisaku 8/1/1944	Yamaguchi, Shigezo 8/18/1935
Itamura, Edith 8/7/2002	Sakamoto, Hantaro 8/25/1954	Yamasaki, Tsunagoro 8/26/1931
Ito, Masu 8/26/1956	Sakano, Ichiro 8/12/1948	Yoshida, Kamekichi 8/26/1952
Iwamoto, Taichi 8/23/1947	Sasaki, Teruko 8/28/2009	Yumibe, Seikichi 8/7/1941
Kaneda, Jirokichi 8/11/1944		
	Shiraishi, Hichitaro 8/16/1949	

Obon season is upon us!

Free Bon Odori dance classes are being held Tuesday and Thursday evenings 7-9pm until the festival. Taught by renowned dancer Sahomi Tachibana, they are an opportunity to learn from one of the best and they are a perfect way to get in the Obon spirit. Come for one class or come for them all. Scouts can earn an Obon Patch if they meet the requirements which will be available at the lessons.

Memorial and honorary Obon lanterns are available to order. New lanterns may be purchased for this year's Obon and lanterns from former years may be re-hung. Order forms are available on the table at the temple.

This year's Obon website: www.pdx-obon.com (linked at the Oregon Buddhist Temple website) also includes the Lantern order form, our festival's performance schedule, food and drink menus, as well as vendors participating.

If you are interested in volunteering for Obon - for food preparation, set-up, or clean-up. Please contact our volunteer coordinator June Shiigi. Volunteering is a great way to participate and connect with fellow Sangha members.

If you have items to donate to this year's Omiyage shop, please contact its coordinator Brenda Fugate.

Please help spread the word about Obon: a variety of fliers are available to share with the community. There is one at the end of the newsletter Obon updates may also be shared on Facebook through the Oregon Buddhist Temple Facebook page. Email or print a copy of the flyer and give them to friends or post at your favorite stops.

Thank you for your support for our major celebration and fundraiser. We are looking forward to this year's festivities!



OBT MEMBERSHIP by Alfred Ono, membership chairman

2015 Oregon Buddhist Temple Membership Dues
New or Renewal Registration

- Membership donation is \$250 per individual adult, \$500 per family
Silver level is \$500/member, Gold level is \$1000/member
- Optional pledge payments of \$25/mo or \$75/qtr for individual or
\$50/mo or \$150/qtr for families
- A limited number of subsidized memberships are available.
Please indicate here to be contacted by membership committee

Name: _____ Date: _____
 Address: _____
 City: _____ State: _____ Zip: _____
 Phone: _____ Email: _____

Membership allows voting privileges, a subscription to the Wheel of Dharma newsletter from the BCA, subscription to Pureland Path newsletter, and most importantly, demonstrates your support of the Temple.

Please mail this form with check to:
Oregon Buddhist Temple
3720 SE 34th Ave
Portland, OR 97202

Enclosed membership fee: _____
 Additional donation: _____
 *Help subsidize other members: _____

Total enclosed: _____

**if you wish to encourage membership and participation by helping those unable to make dues payments.*

THANK YOU FOR YOUR SUPPORT OF THE OREGON BUDDHIST TEMPLE

Please refer to previous page for Pay Pal link.

O BONFEST LANTERNS

Now is the time to dig out your Obon Lanterns if you want them re-hung at OBONFEST August 1st. You need to complete an order form and send it with payment to the Temple. If the Temple has been storing your lantern, please complete and order form indicating we have the lantern and send or drop it off with your payment.



If you would like to order a new lantern, there are Red commemorative lanterns for your business, favorite sports team, or your family.

White memorial lanterns are done with the deceased's name and date of death.

Please pick up an order form at the Temple or next newsletter.

Purchased lanterns can be picked up Sunday following the Obonfest.

More information to follow on the website:

Check out our Obonfest information at

<http://oregonbuddhisttemple.com/events/2015/obonfest2015.htm>

Form was in last month's newsletter. Check online or contact the temple.

Saturday August 1
3pm - 9pm

O bonfest 2015

- ❖ Bon Odori Folk Dancing
- ❖ Taiko Performances
- ❖ Dharma Talks
- ❖ Children's Activities
- ❖ Local Vendors
- ❖ Beer Garden
- ❖ Delicious Japanese Fare

*Memorial lanterns
will be hung on the day of
the Obon festival
in memory of loved ones.
Pre-orders will be
available through the
Oregon Buddhist Temple*

Oregon Buddhist Temple
3720 SE 34th Ave.
Portland, OR 97202
www.oregonbuddhisttemple

*A Summer
Festival to
Remember*



Come Learn Bon Odori Dances

Free classes at the Oregon Buddhist Temple
Tuesdays & Thursdays at 7pm, July 14-July 30
Classes led by the venerable Sahomi Tachibana